

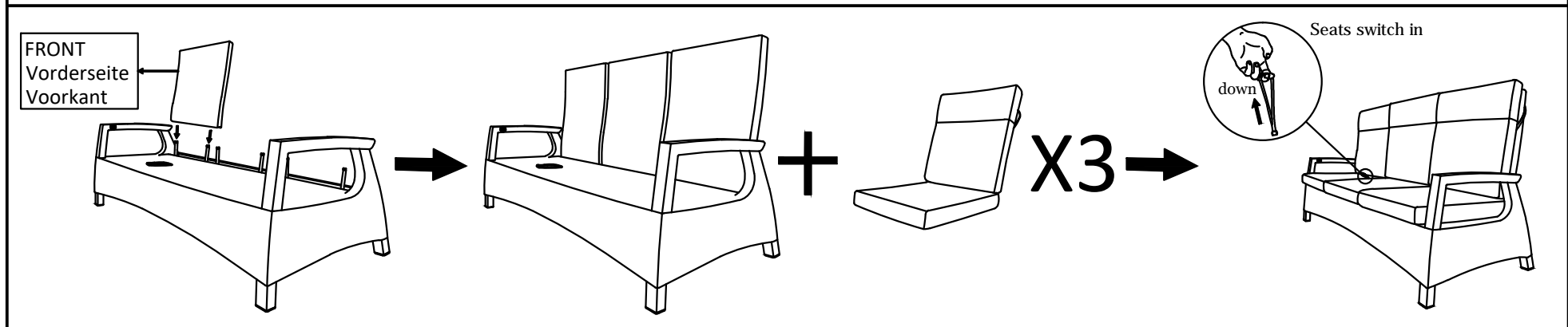
Assembly Instructions

IMPORTANT,RETAIN FOR FUTURE REFERENCE:READ CAREFULLY

Caution: Assemble only with assistance from adults.Do not assemble in presence of children and or being assisted by a child.

Parts:	A	B	C	
Parts Description	Recliner seat	Recliner back	Seat & Backrest Cushion	
Quantity	1pc	3pcs	3pcs	

Assembly Instructions



Step 1.Take out all the components and place them onto a soft and clean surface.put the recliner seat(A) in its upright position.Hold up the recliner back(B)and aim the tubes located at the underside of the backrest,and Plug-slot into the 02 tubes which are on the seat base.Push firmly and fully downwards

Step2.Put the cushion (C)onto the chair,as shown in the picture

Step3.Make sure every Part is connected well and this Recliner Chair is ready for use